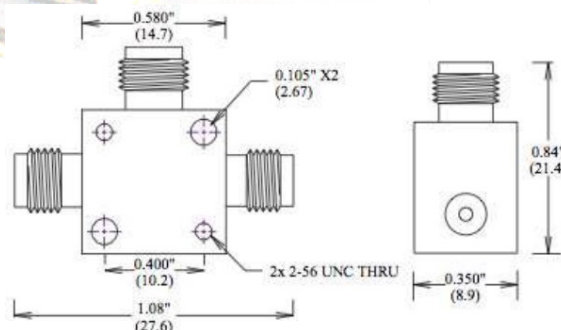
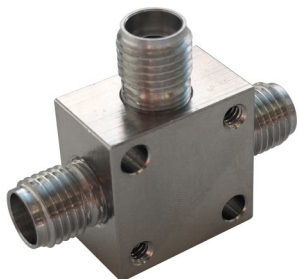


Broadband Resistive Power Divider

WA1575

DC - 40.0 GHz

1 WATT



Features

Female precision 2.92mm port 1, 2, and 3; all ports mate non-destructively with other SMA, 2.92mm and 3.5mm connectors. Designed to meet MIL-DTL-3933 environmental specification. Unit may be mounted in any position.

Lightweight miniature package with high power capability.

Specifications

Nominal Impedance: 50 ohms.

Frequency Range: DC - 40.0 GHz

Power Coefficient: < 0.005 dB/dB/W. Bidirectional in power.

Power Rating: 1 W maximum average rated power to 25°C ambient temperature. 1 kW peak power (5 µsec pulse width, 0.05% duty cycle).

Temperature Range: -55°C to +85°C.

Temperature Coefficient: < 0.004 dB/dB/°C.

Construction: Nickel plated brass body; stainless steel connectors; gold plated beryllium copper contacts. RoHS Compliant.

Phase : < 2° (DC to 19 GHz), <5° (19 to 40 GHz)

Insertion Loss: 6 dB nominal, 6.5 dB maximum (between input and either output).

Maximum Amplitude Tracking:

Frequency Range (GHz)	Tracking (dB)
	WA1574
DC - 19	< 0.25
19 - 40	< 0.50

Maximum VSWR:

Frequency (GHz)	VSWR
	WA1574
DC - 40.0	1.7

Dimensions:

Weight:	0.01 (1.76)
Length:	29.00 (1.14)
Width:	9.00 (0.35)
Height:	22.00 (0.87)

Note: Dimensions are given in mm (in), or g (oz). Weight figure is nominal, with our standard connector configuration. Additional connector options may be available.