

Terminations (50 Ohm Loads)

Adapters Attenuators Couplers DC Blocks Detectors Isolators & Circulators Phase Shifters Power Dividers and Hybrids **Terminations (50 Ohm Loads)** Waveguide

Type N (M) DC to 18 GHz (Low/Medium Power)



Features

- Low VSWR
- Broadband
- Medium Power, Superior Performance 40W, 20W, 10W, 5W, and 1W Models

Models

- 376BNM, 378NM, 370BNM, 379BNM, 377BNM, 375BNM, 374BNM, 367NM

Model	376BNM	378NM	370BNM	379BNM
Low Frequency (GHz)	DC	DC	DC	DC
High Frequency (GHz)	12.4	18.0	18.0	18.0
Average Power (W)	40	1	5	5**
Peak Power (kW)	7.5	1	2	2
VSWR (max)	1.10 + .025f*	1.04 + .003f*	1.05 + .015f*	1.05 + .010f*
Maximum Weight (oz)	10	3	3	3
Maximum Weight (gr)	283	85	85	85
Special Notes:	A , B	A , B	A , B	A , B

Special Notes:

A: f* denotes frequency in GHz.

B: Power rating is specified at 25° and free air convection at atmospheric (760mm) pressure. Derate power capability linearly from stated value at 25°C to 0 watts at 135°C.

Model	377BNM	375BNM	374BNM	367NM
Low Frequency (GHz)	DC	DC	DC	2.0
High Frequency (GHz)	18.0	18.0	18.0	18.0
Average Power (W)	5**	10	20	40
Peak Power (kW)	2	5	5	5
VSWR (max)	1.05 + .005f*	1.05 + .015f*	1.05 + .015f*	1.07 + .005f*
Maximum Weight (oz)	3	3	5	9
Maximum Weight (gr)	85	85	142	255
Special Notes:	A , B	A , B	A , B	A , B

Special Notes:

A: f* denotes frequency in GHz.

B: Power rating is specified at 25° and free air convection at atmospheric (760mm) pressure. Derate power capability linearly from stated value at 25°C to 0 watts at 135°C.

Terminations (50 Ohm Loads)

Adapters Attenuators Couplers

DC
Blocks

Detectors

Isolators &
Circulators

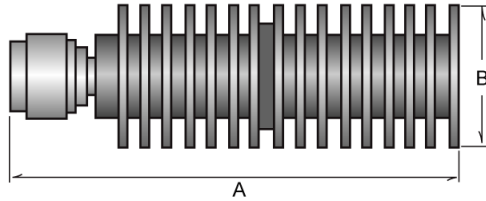
Phase
Shifters

Power Dividers and
Hybrids

**Terminations (50 Ohm
Loads)**

Waveguide

Type N (M) DC to 18 GHz (Low/Medium Power)



Outline Drawings For Models : 376BNM, 374BNM, 367NM

Units	A	B
376BNM		
in.	5.07	1.66
mm	128.78	42.16
374BNM		
in.	2.44	1.28
mm	61.98	32.51
367NM		
in.	7.57	1.78
mm	192.28	45.21

Notes:

Unless otherwise specified dimensions are max. and for reference only. Contact the factory for detailed specifications and outline drawing. For Typical VSWR Curves proceed to the end of this section.

Terminations (50 Ohm Loads)

Adapters Attenuators Couplers

DC Blocks

Detectors

Isolators & Circulators

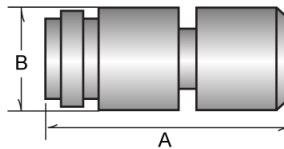
Phase Shifters

Power Dividers and Hybrids

Terminations (50 Ohm Loads)

Waveguide

Type N (M) DC to 18 GHz (Low/Medium Power)



Outline Drawings For Models : 378NM, 370BNM, 379BNM, 377BNM

Units	A	B
378NM		
in.	1.88	.72
mm	47.75	18.29
370BNM , 379BNM, 377BNM		
in.	1.67	.72
mm	42.42	18.29

Notes:

Unless otherwise specified dimensions are max. and for reference only. Contact the factory for detailed specifications and outline drawing. For Typical VSWR Curves proceed to the end of this section.

Terminations (50 Ohm Loads)

Adapters Attenuators Couplers

DC
Blocks

Detectors

Isolators &
Circulators

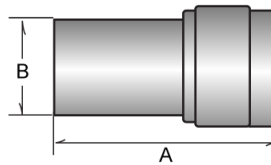
Phase
Shifters

Power Dividers and
Hybrids

**Terminations (50 Ohm
Loads)**

Waveguide

Type N (M) DC to 18 GHz (Low/Medium Power)



Outline Drawings For Models : 375BNM

Units	A	B
	375BNM	
in.	1.61	0.70
mm	40.89	17.78

Notes:

Unless otherwise specified dimensions are max. and for reference only. Contact the factory for detailed specifications and outline drawing. For Typical VSWR Curves proceed to the end of this section.

Terminations (50 Ohm Loads)

Adapters Attenuators Couplers DC Blocks Detectors Isolators & Circulators Phase Shifters Power Dividers and Hybrids **Terminations (50 Ohm Loads)** Waveguide

Type N (M) DC to 18 GHz (Low/Medium Power)

